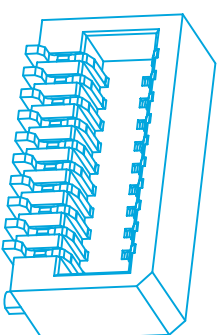
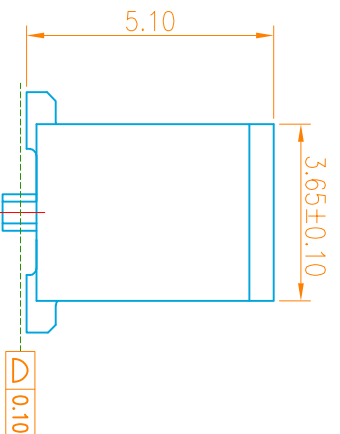
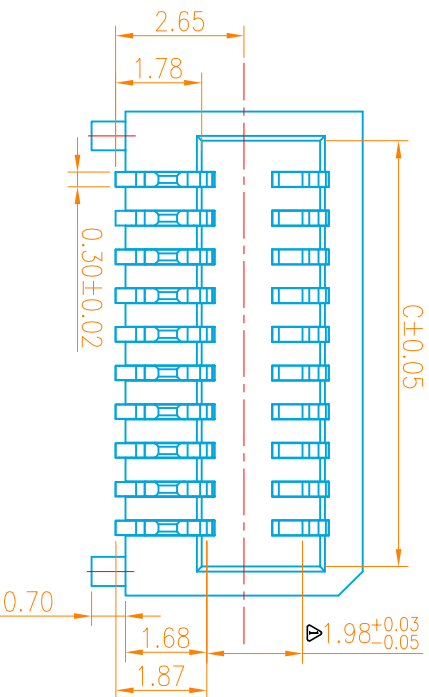
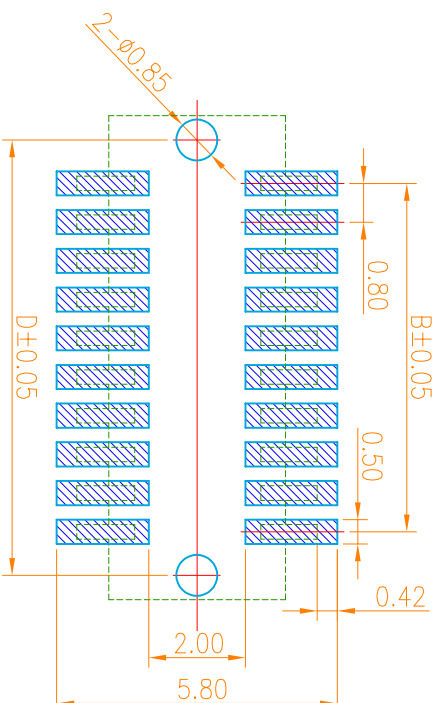
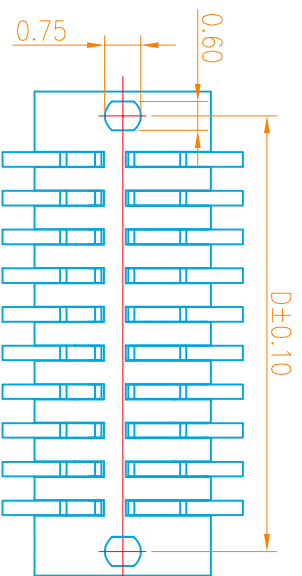


MATING HEIGHT
SCALE:1.25:1



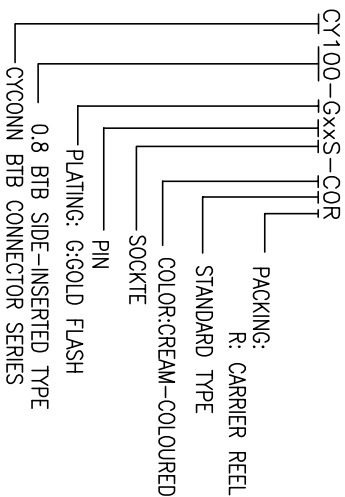
3D VIEW



RECOMMENDED PCB PATTERN DIM.
TOLERANCE : ±0.05

NOTES:

- 1.HOUSING: LCP HIGH-TEMP THERMOPLASTIC UL94V-0 COLOR:CREAM-COLOURED
- 2.TERMINAL:PHOSPHOR BRONZE
PLATING:1μ" GOLD FLASH OVERALL 50~100μ" NICKEL UNDER PLATED.
- 3.CODING INFORMATION: CY100-GXXS-COR



0.8 BTB SIDE-INSERTED TYPE
CYCONN BTB CONNECTOR SERIES

| NO. of contacts | Dimensions | | | |
|-----------------|------------|-------|-------|-------|
| | A. | B. | C. | D. |
| 4 | 3.60 | 0.80 | 2.45 | 2.60 |
| 6 | 4.40 | 1.60 | 3.25 | 3.40 |
| 8 | 5.20 | 2.40 | 4.05 | 4.20 |
| 10 | 6.00 | 3.20 | 4.85 | 5.00 |
| 12 | 6.80 | 4.00 | 5.65 | 5.80 |
| 14 | 7.60 | 4.80 | 6.45 | 6.60 |
| 16 | 8.40 | 5.60 | 7.25 | 7.40 |
| 18 | 9.20 | 6.40 | 8.05 | 8.20 |
| 20 | 10.00 | 7.20 | 8.85 | 9.00 |
| 22 | 10.80 | 8.00 | 9.65 | 9.80 |
| 24 | 11.60 | 8.80 | 10.45 | 10.60 |
| 26 | 12.40 | 9.60 | 11.25 | 11.40 |
| 28 | 13.20 | 10.40 | 12.05 | 12.20 |
| 30 | 14.00 | 11.20 | 12.85 | 13.00 |
| 32 | 14.80 | 12.00 | 13.65 | 13.80 |
| 34 | 15.60 | 12.80 | 14.45 | 14.60 |
| 36 | 16.40 | 13.60 | 15.25 | 15.40 |
| 38 | 17.20 | 14.40 | 16.05 | 16.20 |
| 40 | 18.00 | 15.20 | 16.85 | 17.00 |
| 42 | 18.80 | 16.00 | 17.65 | 17.80 |
| 44 | 19.60 | 16.80 | 18.45 | 18.60 |
| 46 | 20.40 | 17.60 | 19.25 | 19.40 |
| 48 | 21.20 | 18.40 | 20.05 | 20.20 |
| 50 | 22.00 | 19.20 | 20.85 | 21.00 |
| 52 | 22.80 | 20.00 | 21.65 | 21.80 |

东莞市创亿科技有限公司
DONGGUAN CYCONN TECHNOLOGY CO., LTD

ROHS Compliant
2013/9/SEC

PAH
Restriction

| | | | | |
|-------------------|----------------------|-------|----------|----|
| 修訂 | 新增導線腳位尺寸及接線點位置 | 簽名 | 日期 | 版本 |
| SR | REVISION DESCRIPTION | Kevin | 08/15/17 | B |
| 一 般 公 差 | | | | |
| GENERAL TOLERANCE | | | | |
| X ±0.25 | | | | |
| Y ±0.15 | | | | |
| Z ±0.15 | | | | |
| ANGLES ±1° | | | | |

制圖 (DW):

審核 (CHK):

接准 (APP):

品名 (ITEM): 0.8mm 側插BTB SOCKET

料號 (PART NO.): CY100-GXXS-COR

比例 (SCALE): 1:8

單位 (UNITS): mm

張數 (SHEET): 1 OF 1

圖檔 (SIZE): A4